

# FIITJEE Big Bang Edge Test - 2022

for students presently in **Class 6 (going to 7) (Paper 1)**

Time: 3 Hours (9:00 am – 12:00 pm)

**CODE: 67-1**

Maximum Marks: 240

## Instructions:

Caution: Class, Paper, Code as given above MUST be correctly marked on the answer OMR sheet before attempting the paper. Wrong Class, Paper or Code will give wrong results.

1. You are advised to devote 35 Minutes on Section-I, 35 Minutes on Section-II, 50 Minutes on Section-III, 30 Minutes on Section-IV and 30 Minutes on Section-V.
2. This Question paper consists of 5 sections. Marking scheme is given in table below:

Section	Subject	Question no.	Marking Scheme for each question	
			Correct answer	Wrong answer
SECTION – I	APTITUDE TEST	1 to 12	+3	0
		13 to 18	+4	0
SECTION – II	PHYSICS (PART-A)	19 to 22	+2	0
	CHEMISTRY (PART-B)	23 to 26	+2	0
	MATHEMATICS (PART-C)	27 to 31	+2	0
	BIOLOGY (PART-D)	32 to 36	+2	0
SECTION – III	PHYSICS (PART-A)	37 to 48	+1.5	0
	CHEMISTRY (PART-B)	49 to 60	+1.5	0
	MATHEMATICS (PART-C)	61 to 72	+1.5	0
	BIOLOGY (PART-D)	73 to 84	+1.5	0
SECTION – IV	PHYSICS (PART-A)	85 to 88	+3	0
	CHEMISTRY (PART-B)	89 to 92	+3	0
	BIOLOGY (PART-C)	93 to 96	+3	0
SECTION – V	MATHEMATICS (PART-A)	97 to 102	+3	0
	MATHEMATICS (PART-B)	103 to 108	+3	0

3. Answers have to be marked on the OMR sheet. The Question Paper contains blank spaces for your rough work. No additional sheets will be provided for rough work.
4. Blank papers, clip boards, log tables, slide rule, calculator, cellular phones, pagers and electronic devices, in any form, are not allowed.
5. **Before attempting paper write your OMR Answer Sheet No., Registration Number, Name and Test Centre** in the space provided below.
6. **See method of marking of bubbles at the back of cover page for question no. 103 to 108.**

**Note:** Please check this Question Paper contains all **108** questions in serial order. If not so, exchange for the correct Question Paper.

**OMR Answer Sheet No. :** \_\_\_\_\_  
**Registration Number :** \_\_\_\_\_  
**Name of the Candidate :** \_\_\_\_\_  
**Test Centre :** \_\_\_\_\_

For questions **103 to 108**

Numerical based questions single digit answer 0 to 9

**Example 1:**

If answer is 6.

Correct method:

① ② ③ ④ ⑤ ● ⑦ ⑧ ⑨

**Example 2:**

If answer is 2.

Correct method:

① ● ③ ④ ⑤ ⑥ ⑦ ⑧ ⑨


SAMPLE PAPER

# Recommended Time: 35 Minutes for Section – I

## Section – I

### APTITUDE TEST

This section contains **18 Multiple Choice Questions** number **1 to 18**. Each question has 4 choices (A), (B), (C) and (D), out of which **ONLY ONE** is correct.

- Find the next term in the sequence 7G, 11K, 13M, \_\_\_\_\_.  
 (A) 15Q (B) 17Q (C) 15P (D) 17P
- In the following question, find the word which holds same relation with the third word as there is between the first two words.  
 Cap : Head :: specs : ?  
 (A) Eye (B) Cloth (C) Hair (D) Face
- Find out the alternative figure which contains figure (X) as its part.  
  
 (A) 1 (B) 2 (C) 3 (D) 4
- Arrange the following in a meaningful order:-  
 1) Curd, 2) Grass 3) Butter 4) Milk 5) Cow  
 (A) 2, 5, 4, 3, 1 (B) 4, 2, 5, 3, 1 (C) 5, 2, 4, 1, 3 (D) 5, 2, 3, 4, 1
- Which value will come in the place of question mark (?)  
 12, 22, 69, 272, 1365, ?  
 (A) 6830 (B) 8184 (C) 8195 (D) 8196
- If  $234 = 4916$ ,  $562 = 25364$ , then what will be the value for 526  
 (A) 25436 (B) 250436 (C) 42536 (D) 362504

*Space for Rough Work*

7. If 'REQUEST' is written as 'S2R52TU', how will 'ACID' be written ?  
(A) BDJE (B) 1394 (C) B3J4 (D) None of these
8. If  $7 + 3 = 421$ ,  $11 + 7 = 477$  and  $9 + 5 = 445$ , then  $6 + 2 = ?$   
(A) 444 (B) 412 (C) 475 (D) 487
9. Which of the following word cannot be formed from the given words ?  
CONSTRUCTION  
(A) CAUTION (B) COINS (C) NOTION (D) SUCTION
10. Two brothers Manish and Nitin walk in opposite directions for 3 km Manish is walking towards east. After 3 km, each both turn right and again walk 3 km each. Both turn to face each other. In which direction is Nitin looking ?  
(A) East (B) South (C) South-East (D) North-West

**Direction (Q11):** Read the following information and answer the questions given below :-

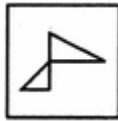
Seven boys P, Q, R, S, T, U and V are standing in a line.

- (I) V is between P and T.  
(II) U and P have one boy between them.  
(III) T and R have two boys between them.  
(IV) S is to the immediate right of u.  
(V) R and Q have three boys between them.
11. R is standing between :  
(A) P and U (B) S and V (C) P and S (D) None of these
12. If B is coded as 8, F is coded as 6, Q is coded as 4, D is coded as 7, T is coded as 2, M is coded as 3 and K is coded as 5, then which of the following is the coded form of QKTBFM ?  
(A) 4 5 2 6 8 3 (B) 4 7 2 6 8 3 (C) 4 5 2 7 83 (D) None of these
13. Five persons A, B, C, D, E scored different marks in an examination. If B scored more marks than D and E only while C does not score the highest marks then which of the following has the second highest marks ?  
(A) A (B) B (C) C (D) D
14. In the following question, select the odd letter group from the given alternatives.  
(A) C P B O (B) B O D Q (C) E S G T (D) A N H U

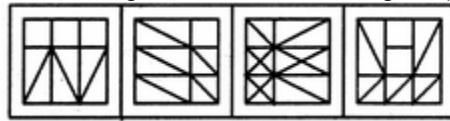
---

*Space for Rough Work*

15. Find out the alternative figure which contains figure (X) as its part.



(X)  
(A) 1

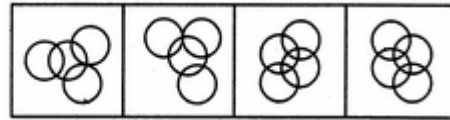


(1) (2) (3) (4)  
(B) 2 (C) 3 (D) 4

16. Find out the alternative figure which contains figure (X) as its part.

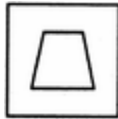


(X)  
(A) 1

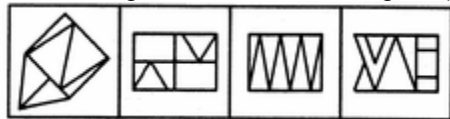


(1) (2) (3) (4)  
(B) 2 (C) 3 (D) 4

17. Find out the alternative figure which contains figure (X) as its part.

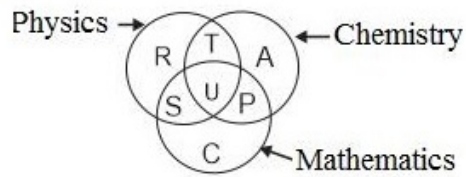


(X)  
(A) 1



(1) (2) (3) (4)  
(B) 2 (C) 3 (D) 4

18. Study the diagram and identify the region which represents students who study both physics and chemistry but not mathematics.



(A) T+S+U+P

(B) C

(C) R+T+A+U+P+S

(D) T

Space for Rough Work

## Recommended Time: 35 Minutes for Section – II

### Section – II

### PHYSICS – (PART – A)

This part contains 4 Multiple Choice Questions number 19 to 22. Each question has 4 choices (A), (B), (C) and (D), out of which **ONLY ONE** is correct.

19. Which of the following shows a random motion  
(A) motion of a fan (B) Train on a straight bridge  
(C) dogs playing in a playground (D) None of these
20. A speed of 90 kmph is equivalent to  
(A) 25 m/s (B) 20 m/s  
(C) 30 m/s (D) 40 m/s
21. 1 man walks 70 km North, 80 km South & then 20 km North. Find his displacement & distance  
(A) 20 km, 170 km (B) 50 km, 180 km  
(C) 10 km, 170 km (D) 100 km, 180 km
22. The image formed by a plane mirror  
(A) cannot be cast on screen (B) is real  
(C) is always virtual (D) both (A) and (C)

---

*Space for Rough Work*

## CHEMISTRY – (PART – B)

This part contains 4 Multiple Choice Questions number 23 to 26. Each question has 4 choices (A), (B), (C) and (D), out of which **ONLY ONE** is correct.

23. Yarn is woven to get fabric using  
(A) Charkha  
(C) Looms  
(B) Spinning machines  
(D) Knitting needles
24. Which is a magnetic material?  
(A) Copper  
(C) Aluminium  
(B) Nickel  
(D) Oxygen
25. Identify the sublimable salt  
(A) NaCl  
(C) NH<sub>4</sub>Cl  
(B) KCl  
(D) MgCl<sub>2</sub>
26. Making a dough from flour is a \_\_\_\_\_ change  
(A) Physical reversible  
(C) Chemical reversible  
(B) Chemical irreversible  
(D) Physical irreversible

---

Space for Rough Work

## MATHEMATICS – (PART – C)

This part contains 5 Multiple Choice Questions number 27 to 31. Each question has 4 choices (A), (B), (C) and (D), out of which **ONLY ONE** is correct.

27. The length of longest tape which can be used to measure exactly the length 7m, 3m 85 cm and 12m 95 cm.  
(A) 35 cm (B) 30 cm (C) 40 cm (D) 45 cm
28. Two angles of a triangle are complementary. The third angle is  
(A)  $60^\circ$  (B)  $45^\circ$  (C)  $36^\circ$  (D)  $90^\circ$
29. An isosceles trapezium has  
(A) equal parallel sides (B) equal non parallel sides  
(C) equal opposite sides (D) None of these
30. A circle has  
(A) no line of symmetry (B) one line of symmetry  
(C) two lines of symmetry (D) an unlimited number of lines of symmetry
31. If  $1A2B5$  is exactly divisible by 9, then the least value of  $(A + B)$  is  
(A) 0 (B) 1  
(C) 2 (D) 10

---

*Space for Rough Work*



**BIOLOGY – (PART – D)**

This part contains **5 Multiple Choice Questions** number **32 to 36**. Each question has 4 choices (A), (B), (C) and (D), out of which **ONLY ONE** is correct.

32. For photosynthesis plants need  
(A) Carbon dioxide (B) Water  
(C) Sunlight (D) All of these
33. Small, soft stem plants are called as  
(A) Herbs (B) Shrubs  
(C) Trees (D) Tendrils
34. Female reproductive part of a plant is called as  
(A) Stamen (B) Anther  
(C) Petiole (D) Pistil
35. Nodes and Internodes are present in  
(A) Leaves (B) Stem  
(C) Roots (D) Flower
36. Exchange of gases in plants occurs through  
(A) Stomata (B) Flower  
(C) Pollens (D) Style

---

**Space for Rough Work**

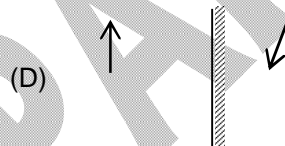
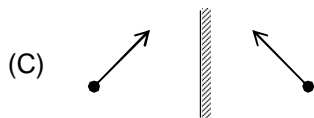
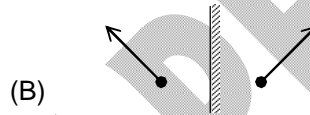
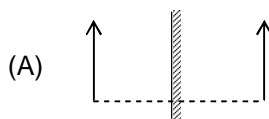
**Recommended Time: 50 Minutes for Section – III**

**Section – III**

**PHYSICS – (PART – A)**

*This part contains 12 Multiple Choice Questions number 37 to 48. Each question has 4 choices (A), (B), (C) and (D), out of which ONLY ONE is correct.*

37. Which one is wrong image formation:



38. Consider the motion of the tip of the second hand of a clock. In 1 minutes  
 (A) the distance covered is zero  
 (B) the displacement is zero  
 (C) the average speed is zero  
 (D) none of these
39. 144 minutes is equal to  
 (A) 1 hour  
 (B) 0.1 hour  
 (C) 2.4 hours  
 (D) 0.5 hour
40. Calculate the value of  $65 \text{ m s}^{-1}$  in  $\text{km h}^{-1}$   
 (A) 90  
 (B) 50  
 (C) 234  
 (D) 25
41. The CGS unit of speed is \_\_\_\_\_.  
 (A) second  
 (B)  $\text{cm s}^{-1}$   
 (C) Both (A) and (B)  
 (D) hour

*Space for Rough Work*

42. A man travels 80 m distance in 10 sec and 220 m distance in 20 sec. His average speed will be  
(A) 2 m/s. (B) 4 m/s.  
(C) 10 m/s. (D) 25 m/s.
43. 12000 minutes is equal to  
(A) 2000 hours (B) 200 hours  
(C) 20 hours (D) 1 hour
44. Which of these is not a luminous source of light?  
(A) Stars (B) Venus  
(C) Sun (D) both (B) and (C)
45. In Solar eclipse which among the earth, moon, sun lies between other two?  
(A) Earth (B) Moon  
(C) Sun (D) none of these
46. Height of the image formed by a plane mirror, of an object of 10 m high kept at distance of 10 m from the mirror is  
(A) 10 m (B) 20 m  
(C) 2 m (D) 0.2 m
47. Motion of a Mars is an example of  
(A) Periodic motion (B) Circular motion  
(C) Oscillatory motion (D) both (A) and (C)
48. An athlete runs along a circular track of radius 42 m with a speed of 20 m/s then the time taken by the athlete to complete 2 rounds is  
(A) 264 s (B) 26.4 s  
(C) 52.8 s (D) incomplete information

---

*Space for Rough Work*

## CHEMISTRY – (PART – B)

This part contains 12 Multiple Choice Questions number 49 to 60. Each question has 4 choices (A), (B), (C) and (D), out of which **ONLY ONE** is correct.

49. Soda water contains excess \_\_\_\_\_ in dissolved state.  
(A) H<sub>2</sub> (B) CO<sub>2</sub>  
(C) O<sub>2</sub> (D) N<sub>2</sub>
50. For any substance, its melting point will be the same as its \_\_\_\_\_ point.  
(A) Vaporization (B) Sublimation  
(C) Freezing (D) Condensation
51. Dissolution of a solute in a solvent depends upon  
(A) Pressure (B) Temperature  
(C) Amount of the solute (D) All of these
52. The purest form of natural water is  
(A) Rain water (B) Ground water  
(C) Surface water (D) Sea water.
53. Which gas is used to fill weather observation balloons?  
(A) Hydrogen (B) Helium  
(C) Oxygen (D) Chlorine
54. The reverse process of boiling  
(A) Vapourization (B) Distillation  
(C) Condensation (D) None of these
55. Which materials make a heterogeneous mixture?  
(A) Sand + Water (B) Salt + Water  
(C) Alcohol + Water (D) Ink + Water

---

*Space for Rough Work*

56. The first step for separating the constituent of a muddy water is  
(A) Decantation (B) Evaporation  
(C) Sedimentation (D) Filtration
57. Which of the following substance will float on water?  
(A) Plastic (B) Stone  
(C) Iron nail (D) Hard metal
58. Burning of paper is  
(A) Fast change (B) Irreversible change  
(C) Chemical change (D) All of these
59. The device in a loom that carries yarn back and forth across the lengthwise yarn is  
(A) Warp (B) Shuttle  
(C) Weft (D) Bobbins
60. The left over substance in the filter paper during filtration is  
(A) Filtrate (B) Solvent  
(C) Residue (D) Solute

---

*Space for Rough Work*

**MATHEMATICS – (PART – C)**

This part contains 12 Multiple Choice Questions number 61 to 72. Each question has 4 choices (A), (B), (C) and (D), out of which **ONLY ONE** is correct.

61. If  $x7y5$  is exactly divisible by 3, then the least value of  $(x + y)$  is  
(A) 6 (B) 0 (C) 4 (D) 3
62. Find ratio of slant height to that of radius of cone, if height of cone is double the radius  
(A)  $1:\sqrt{5}$  (B)  $\sqrt{5}:1$  (C)  $1:2$  (D)  $2:1$
63. Two angles are called adjacent angles if they have  
(A) same vertex (B) common arm  
(C) uncommon arms on either sides of common arm  
(D) all of these
64.  $3.\bar{4} + 5.\bar{8} - 7.\bar{9} = \underline{\hspace{2cm}}$   
(A)  $\frac{4}{3}$  (B)  $\frac{8}{5}$  (C)  $\frac{7}{9}$  (D)  $\frac{5}{4}$
65. If  $\frac{a}{3} = \frac{b}{4} = \frac{c}{7}$ , then  $\frac{a+b+c}{c}$  is equal to  
(A) 7 (B)  $\frac{1}{2}$  (C)  $\frac{1}{7}$  (D) 2
66. If the sides of a square are doubled then how much times its area becomes ?  
(A) Two times (B) three times (C) four times (D) six times
67. 'n' is a whole number which when divided by 3 gives 1 as remainder. What will be the remainder when  $2n$  is divided by 3 ?  
(A) 1 (B) 2  
(C) 0 (D) can not say anything

---

*Space for Rough Work*

68. In the adjoining figure, value of  $\angle x$  is equal to  
(A)  $89^\circ$  (B)  $98^\circ$  (C)  $108^\circ$  (D)  $118^\circ$
69. Diagonals of a rhombus are 8 cm and 6 cm respectively, its side is \_\_\_\_  
(A) 5 cm (B) 6 cm  
(C) 7 cm (D) cannot be determined
70. In a  $\triangle DEF$ ,  $\angle D = 45^\circ$  and  $\angle E$  is less than  $\angle D$ , then the triangle is  
(A) acute (B) Right (C) obtuse (D) None of these
71. What is the value of  $\left(\frac{P+Q}{P-Q}\right)$  if  $\frac{P}{Q} = 7$ ?  
(A)  $\frac{1}{3}$  (B)  $\frac{2}{3}$  (C)  $\frac{4}{3}$  (D)  $\frac{7}{8}$
72. Find unit digit of product  $11 \times 12 \times 13 \times 14 \times 15 \times 16$  ?  
(A) 2 (B) 6 (C) 4 (D) 0

---

*Space for Rough Work*

## BIOLOGY – (PART – D)

This part contains **12 Multiple Choice Questions** number **73 to 84**. Each question has 4 choices (A), (B), (C) and (D), out of which **ONLY ONE** is correct.

73. Sweet potato is an example of  
(A) Root (B) Stem  
(C) Fruit (D) Seed
74. Which of the following is a root?  
(A) Potato (B) Carrot  
(C) Sugarcane (D) Rose
75. Which part of the mustard is edible?  
(A) Flower (B) Root  
(C) Seed (D) Embryo
76. Part of the plant responsible for sexual reproduction.  
(A) Stem (B) Root  
(C) Leaves (D) Flower
77. Which part of the plant is responsible for water absorption?  
(A) Root (B) Stem  
(C) Leaves (D) Flower
78. Stalk of the flower is called.  
(A) Pedicel (B) Thalamus  
(C) Petiole (D) Petal
79. Edible part of Pomegranate is  
(A) Flower (B) Seeds  
(C) Sepal (D) Whole fruit

---

*Space for Rough Work*



80. Which is an example of shrub?  
(A) Spinach (B) Guava  
(C) Mint (D) Tomato
81. Scurvy is caused due to deficiency of  
(A) Vitamin A (B) Vitamin B  
(C) Vitamin C (D) Vitamin D
82. Carbohydrates are present in  
(A) Rice (B) Carrot  
(C) Lemon (D) Pulses
83. Which of the following is not a part of a plant?  
(A) Style (B) Anther  
(C) Limb (D) Stomata
84. Night blindness can be cured by eating  
(A) Pumpkin (B) Amla  
(C) Carrots (D) Both (A) and (C)

---

*Space for Rough Work*

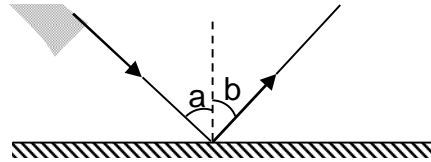
**Recommended Time: 30 Minutes for Section – IV**

**Section – IV**

**PHYSICS – (PART – A)**

*This part contains 4 Multiple Choice Questions number 85 to 88. Each question has 4 choices (A), (B), (C) and (D), out of which **ONLY ONE** is correct.*

85. Read the given statements and select the correct option:  
**Statement 1:** The displacement of a moving body may be zero, even distance can be finite.  
**Statement 2:** If a body moves such that finally it arrives at initial point, then displacement is zero while distance is finite.  
 (A) Both statements 1 and 2 are true and statement 2 is the correct explanation of statement 1.  
 (B) Both statements 1 and 2 are true but statement 2 is not the correct explanation of statement 1.  
 (C) Statement 1 is true and statement 2 is false.  
 (D) Statement 1 is false and statement 2 is true.
86. What causes a moving body to change in its state of motion?  
 (A) Its acceleration (B) Force  
 (C) Its speed (D) Its weight
87. According to the laws of reflection one can say that if  $a = 30$  degree then  $b =$   
 (A)  $\angle a = \angle b = 30$  degree  
 (B)  $\angle a < \angle b$   
 (C)  $\angle a > \angle b$   
 (D) none of these



88. Which of the following is an example of random motion?  
 (A) Car moving on a straight road (B) Athlete running on a circular track  
 (C) To-and-fro motion of a pendulum (D) Motion of a mosquito in marriage hall.

**Space for Rough Work**

## CHEMISTRY – (PART – B)

This part contains 4 Multiple Choice Questions number 89 to 92. Each question has 4 choices (A), (B), (C) and (D), out of which **ONLY ONE** is correct.

89. Woolen fibres have \_\_\_\_\_ trapped between them which acts as an \_\_\_\_\_ of heat.  
(A) Water, Conductor (B) Air, conductor  
(C) Water, insulator (D) Air, insulator
90. A mixture of small stones and sand can be separated by  
(A) Winnowing (B) Sieving  
(C) Hand picking (D) Threshing
91. The process in which cotton fibres are separated from seeds is called  
(A) Carding (B) Ginning  
(C) Combing (D) Retting
92. Loading speeds up  
(A) Sublimation (B) Decantation  
(C) Sedimentation (D) Filtration

---

*Space for Rough Work*

## BIOLOGY – (PART – C)

*This part contains 4 Multiple Choice Questions number 93 to 96. Each question has 4 choices (A), (B), (C) and (D), out of which **ONLY ONE** is correct.*

93. Water in xerophytes is stored in  
(A) Spines  
(C) Stem  
(B) Roots  
(D) Root hair
94. Which of the following is a function of leaves?  
(A) Photosynthesis  
(C) Transpiration  
(B) Exchange of gases  
(D) All of these
95. Which of the following has fibrous root?  
(A) Mango  
(C) Potato  
(B) Wheat  
(D) Peas
96. Test for carbohydrates are  
(A) Iodine test  
(C) Fehling solution  
(B) Spot test  
(D) Biuret test

---

*Space for Rough Work*

**Recommended Time: 30 Minutes for Section – V****Section – V****MATHEMATICS – (PART – A)**

*This part contains 6 Multiple Choice Questions number 97 to 102. Each question has 4 choices (A), (B), (C) and (D), out of which ONLY ONE is correct.*

97. Two numbers A and B are such that the sum of 5% of A and 4% of B is two-third of the sum of 6% of A and 8% of B. Find the ratio A : B.  
(A) 2 : 3                      (B) 1 : 1                      (C) 3 : 4                      (D) 4 : 3
98. If a ray stands on a line, then the sum of the adjacent angles so formed is  
(A)  $90^\circ$                       (B)  $180^\circ$                       (C)  $270^\circ$                       (D)  $360^\circ$
99. Three cubes of sides 3 cm, 4 cm and 5 cm are melted and a new cube is formed. The side of the new cube is  
(A) 8 cm                      (B) 6 cm                      (C) 10 cm                      (D) 12 cm
100. A square of side 1 cm is cut from all four corners of a rectangle of dimensions 6 cm  $\times$  5 cm. Find the perimeter of remaining part of the rectangle.  
(A) 22 cm                      (B) 44 cm                      (C) 45 cm                      (D) 30 cm
101. The polygon with infinite number of sides is called  
(A) nonagon                      (B) octagon                      (C) circle                      (D) None of these
102. If each edge of a cuboid of surface area S is doubled, then find the surface area of the new cuboid.  
(A) 5S                      (B) 6S                      (C) 4S                      (D) 3S

---

*Space for Rough Work*

## MATHEMATICS – (PART – B)

**This part contains 6 Numerical Based Questions number 103 to 108. Each question has Single Digit Answer 0 to 9.**

103. The sum of the interior angles of a polygon is three times the sum of its exterior angles. Find the number of sides of this polygon
104. The radius of a wheel of a bike is 39.9 cm. If the wheel makes 6000 rotation in one, minute If bike takes  $8k$  minutes to cover a distance of 601.92 km, find the value of  $k$ .
105. A cuboid has total surface area  $40 \text{ m}^2$  and its lateral surface area is  $26 \text{ m}^2$ . Find the area of its base in  $\text{m}^2$
106. If a rectangle of side lengths 5 cm and 15 cm is to be divided into three squares of equal areas, then find the side length of square in cm
107. The curved surface area of a right circular cylinder of height 7 cm is  $176 \text{ cm}^2$ . Find the diameter of the base of the cylinder in cm.
108. Simplify :  $14 - \left[ 12 - \left\{ 9 - \left( 7 - \overline{6 - 2} \right) \right\} \right]$

---

*Space for Rough Work*

# FIITJEE Big Bang Edge Test - 2022

for students presently in **Class 6 (going to 7) (Paper 1)**

## SAMPLE PAPER ANSWER KEY

1.	B	2.	A	3.	A	4.	C
5.	B	6.	A	7.	D	8.	B
9.	A	10.	C	11.	A	12.	D
13.	C	14.	D	15.	C	16.	C
17.	C	18.	D	19.	C	20.	D
21.	C	22.	D	23.	C	24.	B
25.	C	26.	D	27.	A	28.	D
29.	B	30.	D	31.	B	32.	D
33.	A	34.	D	35.	B	36.	A
37.	D	38.	B	39.	C	40.	C
41.	B	42.	C	43.	B	44.	B
45.	B	46.	A	47.	A	48.	B
49.	B	50.	C	51.	D	52.	A
53.	B	54.	C	55.	A	56.	C
57.	A	58.	D	59.	A	60.	C
61.	D	62.	B	63.	D	64.	A
65.	D	66.	C	67.	B	68.	B
69.	A	70.	C	71.	C	72.	D
73.	A	74.	B	75.	C	76.	D
77.	A	78.	A	79.	B	80.	D
81.	C	82.	A	83.	C	84.	D
85.	B	86.	B	87.	A	88.	D
89.	D	90.	B	91.	B	92.	C
93.	C	94.	D	95.	B	96.	C
97.	D	98.	B	99.	B	100.	A
101.	C	102.	C	103.	8	104.	5
105.	7	106.	5	107.	8	108.	8